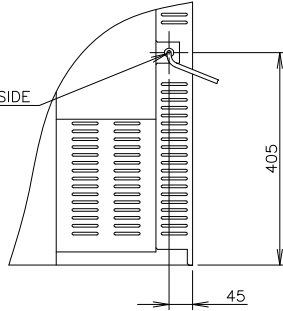
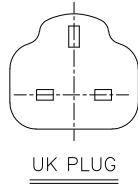


POWER CORD 2000 LONG OUTSIDE
(UK PLUG WITH EARTH WIRE)

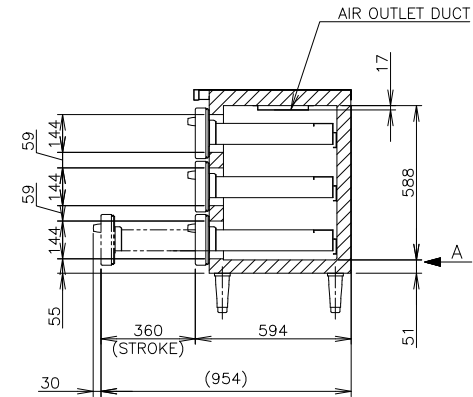
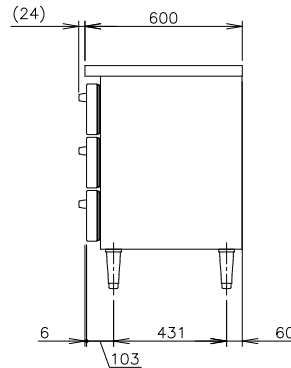
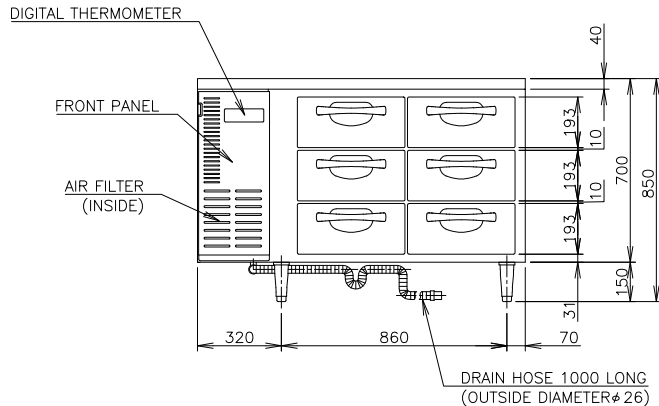
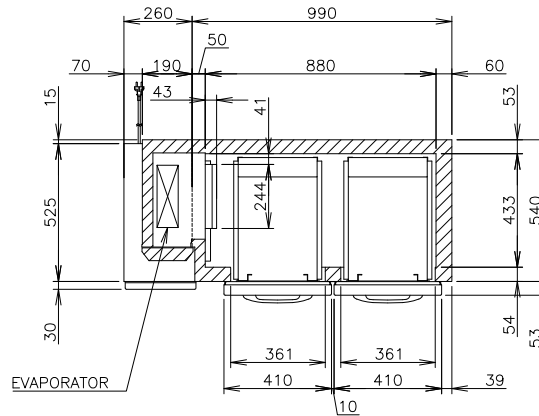
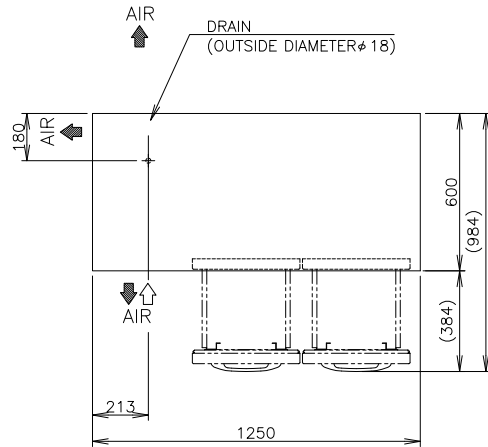


VIEW A (1/10)



UK PLUG

1. Install the product properly in accordance with the instructions on location, electrical connections stated in the instruction manual provided. Allow 10mm extra space at the installation site to meet any installation requirements (additional spacing is also required for proper air flow and pipe connections).
2. The heat rejection is based on the reached pulldown temperature at ambient temperature of 32° C and power supply of 230V 50Hz. The amperage and electric consumption are based on measurements at ambient temperature of 38° C and power supply of 230V 50Hz.
3. The cabinet temperature range of -25 to -7° C is guaranteed at ambient temperature of 38° C.
4. Product code: T018-D102



| | |
|--------------------------------|--|
| ITEM | Hoshizaki Drawer Type Undercounter Freezer |
| MODEL | FTC-125DNA |
| POWER SUPPLY | 1 Phase 230V 50Hz Capacity:1.14kVA(5.2A) |
| AMPERAGE | Rated:3.5A |
| ELECTRIC CONSUMPTION | Heater:391W Defrost:330W |
| HEAT REJECTION | *W |
| POWER CORD | 2.0m (UK Plug with Earth Wire) |
| EFFECTIVE CAPACITY | 218L |
| OUTSIDE DIMENSIONS | 1250mm(W)x600mm(D)x850mm(H) (850-880)mm |
| INSIDE DIMENSIONS | 880mm(W)x433mm(D)x588mm(H) |
| EXTERIOR | Stainless Steel, Galvanized Steel (Rear/Bottom) |
| INTERIOR | Stainless Steel, ABS Plastic |
| INSULATION | Polyurethane Foam |
| INSULATION FOAM BLOWING AGENT | Cyclopentane |
| REFRIGERATION SYSTEM | Forced Air Circulation |
| DEFROST SYSTEM | Heater |
| COMPRESSOR | Hermetic |
| CONDENSER | Fin and Tube type, Air-cooled |
| EVAPORATOR | Fin and Tube Type |
| REFRIGERANT | R404A/190g |
| TEMPERATURE CONTROL | Microprocessor (Digital Temp Indication) Adjustable from -25 to -7°C |
| DEFROST CONTROL | Microprocessor |
| ELECTRIC CIRCUIT PROTECTION | Fuse, Earth Wire |
| REFRIGERANT CIRCUIT PROTECTION | Motor Protector |
| LEG | Plastic Adjustable 150 to 180mm |
| WEIGHT | 120kg (Gross Approx. *kg) |
| PACKAGE | Carton 1315mm(W)x680mm(D)x790mm(H) |
| ACCESSORIES | Drain Hose x 1 (φ26mm OD), Cable strap x 3 |
| OPERATING CONDITIONS | Ambient Temperature:5-38° C Voltage Range:Rated Voltage±6% |

*We reserve the right to make changes in specifications and design without prior notice.